



Natural
Resources
Commission

FINAL REPORT
SUPPORTING PROFILE AND MAP BOOK

Brigalow and Nandewar State Conservation Areas
Managing differently for better ecological outcomes

September 2014

Enquiries

Enquiries about this report should be directed to:

Name	Todd Maher
Phone	(02) 8227 4300
Fax	(02) 8227 4399
E-Mail	Todd.Maher@nrc.nsw.gov.au
Postal address	GPO Box 4206, Sydney NSW 2001

List of acronyms

AHIMS	Aboriginal Heritage Information Management System
ADS40	Airborne Digital Sensor
Cth	Commonwealth (Australian Government)
LiDAR	Light Detection and Ranging
NRC	Natural Resources Commission
NSW	New South Wales
SLATS	Statewide Landcover and Trees Study

This work is copyright. The *Copyright Act 1968* (Cth) permits fair dealing for study, research, news reporting, criticism and review. Selected passages, tables or diagrams may be reproduced for such purposes provided acknowledgement of the source is included.

Document No. D14/0463

ISBN: 978 1 921050 94 7

Contents

Brigalow and Nandewar Community Conservation Area Zones	7
Brigalow and Nandewar State Conservation Areas (Community Conservation Area Zone 3)	8
Adelyne State Conservation Area (148 hectares)	9
Beni State Conservation Area (1,849 hectares)	18
Biddon State Conservation Area (3,352 hectares)	28
Bingara State Conservation Area (1,979 hectares)	38
Bobbiwaa State Conservation Area (2,688 hectares)	48
Bullawa Creek State Conservation Area (99 hectares)	59
Cobbora State Conservation Area (2,261 hectares)	69
Durridgere State Conservation Area (6,172 hectares)	79
Goodiman State Conservation Area (569 hectares)	89
Goonoo State Conservation Area (54,522 hectares)	99
Goonoowigal State Conservation Area (1,055 hectares)	110
Gwydir River State Conservation Area (2,607 hectares)	120
Killarney State Conservation Area (1,858 hectares)	131
Leard State Conservation Area (1,176 hectares)	142
Merriwindi State Conservation Area (1,730 hectares)	152
Pilliga East State Conservation Area (24,669 hectares)	163
Pilliga State Conservation Area (33,386 hectares)	174
Pilliga West State Conservation Area (34,415 hectares)	185
Tingha Plateau State Conservation Area (3,414 hectares)	196
Trinkey State Conservation Area (10,229 hectares)	206
Warialda State Conservation Area (2,913 hectares)	218
Wondoba State Conservation Area (1,663 hectares)	228
Woodsreef State Conservation Area (331 hectares)	238
References	248

This supporting map book should be read in conjunction with the Natural Resources Commission's report *Actively managing for better ecological outcomes* in the Brigalow and Nandewar State Conservation Areas.

This table explains the maps and tables in this book, including primary data sources.

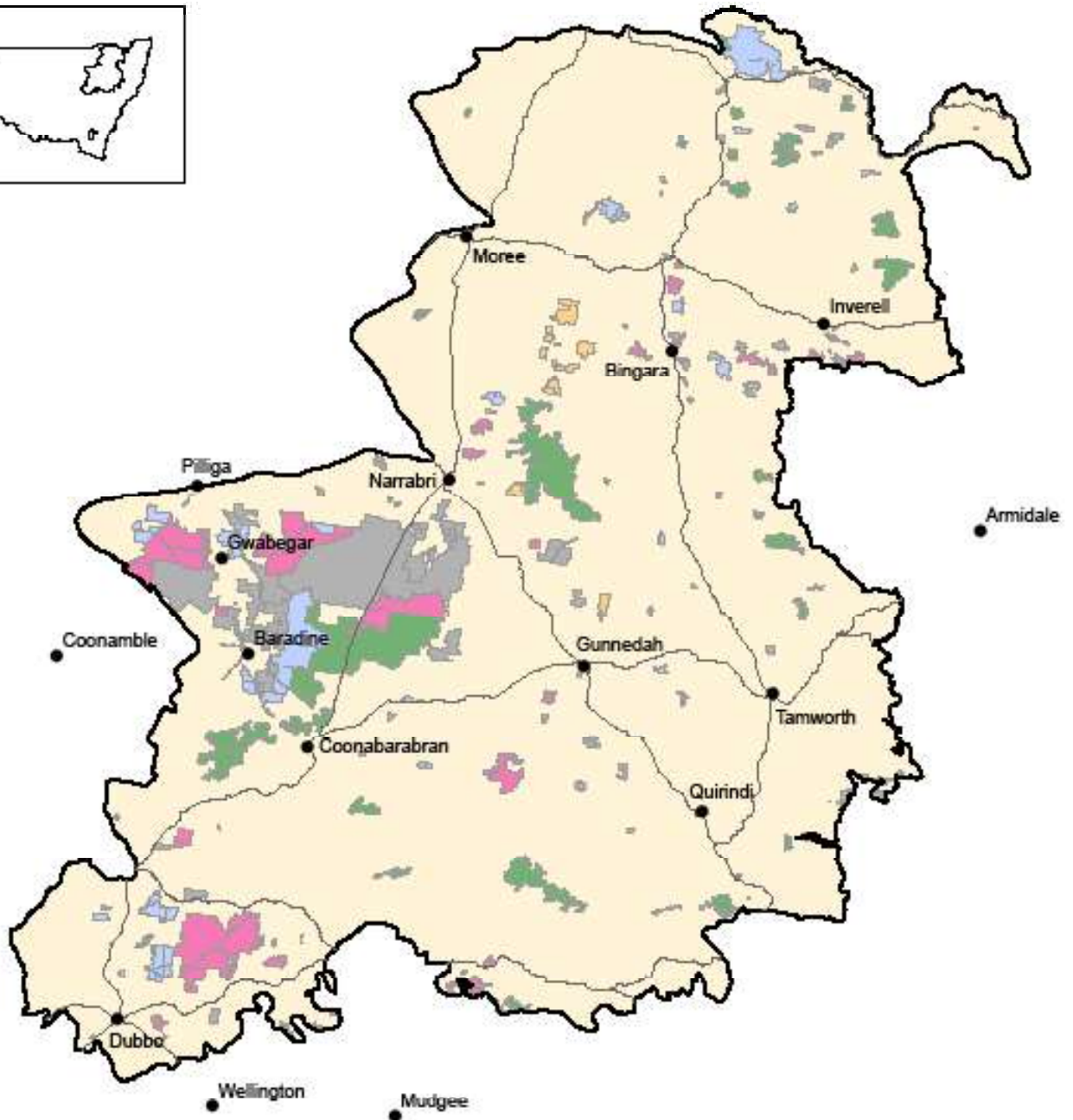
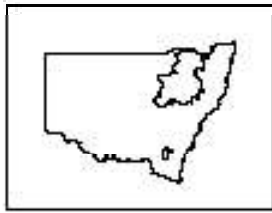
	Notes	Primary data source
Map		
Location	<ul style="list-style-type: none"> Shows location of each State Conservation Area (Zone 3) in the Brigalow Nandewar Community Conservation Area. 	<ul style="list-style-type: none"> NSW Office of Environment and Heritage (2013d) - SCA boundary NSW Office of Environment and Heritage and Heritage - ADS40 imagery data acquired in December 2013
Aerial	<ul style="list-style-type: none"> Shows aerial ADS40 (Airborne Digital Sensor) image of each State Conservation Area. 	<ul style="list-style-type: none"> NSW Office of Environment and Heritage (2013d) - SCA boundary NSW Office of Environment and Heritage and Heritage - ADS40 imagery data acquired in December 2013 Remote Census (2014)
Predicted locations - white cypress pine, black cypress pine and bullock	<ul style="list-style-type: none"> Shows relative probability of each species occurring in each State Conservation Area. 	<ul style="list-style-type: none"> NSW Office of Environment and Heritage (2013d) - SCA boundary Eco Logical Australia (2014)
Continuous canopy density surface - cypress pine	<ul style="list-style-type: none"> Shows relative density of cypress pine canopies in each State Conservation Area. Dark green show denser areas of white cypress pine canopies. White areas show either no white cypress pine or bare ground. 	<ul style="list-style-type: none"> NSW Office of Environment and Heritage (2013d) - SCA boundary NSW Office of Environment and Heritage and Heritage - ADS40 imagery data acquired in December 2013 Remote Census (2014)
Discrete canopy density classes - cypress pine	<ul style="list-style-type: none"> Shows cypress pine grouped in into five canopy density classes in each State Conservation Area. Shows areas containing no area with little or no cypress pine. In some cases, cypress canopy classes may extend over gazetted boundary of State Conservation Area. 	<ul style="list-style-type: none"> NSW Office of Environment and Heritage (2013d) - SCA boundary Remote Census (2014)
Summary statistics (tables) - spatial analysis		
Area of canopy density classes	<ul style="list-style-type: none"> Area and proportion of each cypress canopy class found in each State Conservation Area. Areas of wildfire since 2004 excluded 	<ul style="list-style-type: none"> Remote Census (2014)
Light detection and ranging (LiDAR) data and analysis	<ul style="list-style-type: none"> Describes canopy height profile of white cypress pine and other species across five State Conservation Areas 	<ul style="list-style-type: none"> Forestry Corporation of NSW (2014, 2013) Eco Logical Australia (2014)

	Notes	Primary data source
Summary statistics (tables) - general		
Lindsay types	<ul style="list-style-type: none"> Describes forest type classification and mapping carried out by the (then) Forestry Commission of NSW across State Forests in the central division of NSW. 	<ul style="list-style-type: none"> Lindsay (1967)
NSW Vegetation classification and assessment (VCA) type	<ul style="list-style-type: none"> Vegetation classification system that classifies and describes native vegetation in NSW and relevant conservation significance. Note bullock is referred to as buloke under this classification 	<ul style="list-style-type: none"> Benson et al. (2010)
Native species & Threatened species	<ul style="list-style-type: none"> Native species - count of flora and fauna identified in each State Conservation Area Threatened flora and fauna species listed: Australian Government EPBC Act - <i>Environment Protection and Biodiversity Act 1999</i> (E - Endangered, E4A - Critically endangered, V - Vulnerable, X - Extinct) NSW TSC Act - Threatened Species Conservation Act 1995 (E2 - Endangered Population, V - Vulnerable, V2 - Vulnerable Ecological Community) 	<ul style="list-style-type: none"> NSW Office of Environment and Heritage (2013b) Note that data in the Bionet Atlas come from a number of different sources and are only indicative; the data cannot be considered a comprehensive inventory and may contain errors and omissions NSW Office of Environment and Heritage (2014c)
Cultural heritage - Aboriginal and Non-Aboriginal	<ul style="list-style-type: none"> Number of Aboriginal Heritage Information Management System (AHIMS) registered Aboriginal cultural sites per State Conservation Area Number of heritage items or places of historic heritage per State Conservation Area 	<ul style="list-style-type: none"> NSW Office of Environment and Heritage (2013)
Current management plans	<ul style="list-style-type: none"> Plan of management details included if available Fire management strategy Regional pest management strategy 	<ul style="list-style-type: none"> NSW National Parks and Wildlife Service (2012c, 2012d, 2012e, 2012a, 2012b) NSW Office of Environment and Heritage (2014) NSW Office of Environment and Heritage (2012b, 2012c, 2012a)
Fire history	<ul style="list-style-type: none"> Prescribed burn and wildfire data from 2005-06 to 2012-13 (prior years data unavailable) 	<ul style="list-style-type: none"> NSW Office of Environment and Heritage (2014a)
Mining	<ul style="list-style-type: none"> Current titles for each State Conservation Area - exploration and application (petroleum, coal and minerals) 	<ul style="list-style-type: none"> NSW Department of Trade and Investment (2013)
Apiarist sites	<ul style="list-style-type: none"> Licensed apiarist (bee keeping) sites 	<ul style="list-style-type: none"> NSW Office of Environment and Heritage (2013b)

Note: The total hectares for each State Conservation Area are different in some of the data sources included in these profiles, due to the use of data that goes beyond the actual boundaries.

[This page is intentionally left blank]

Brigalow and Nandewar Community Conservation Area Zones

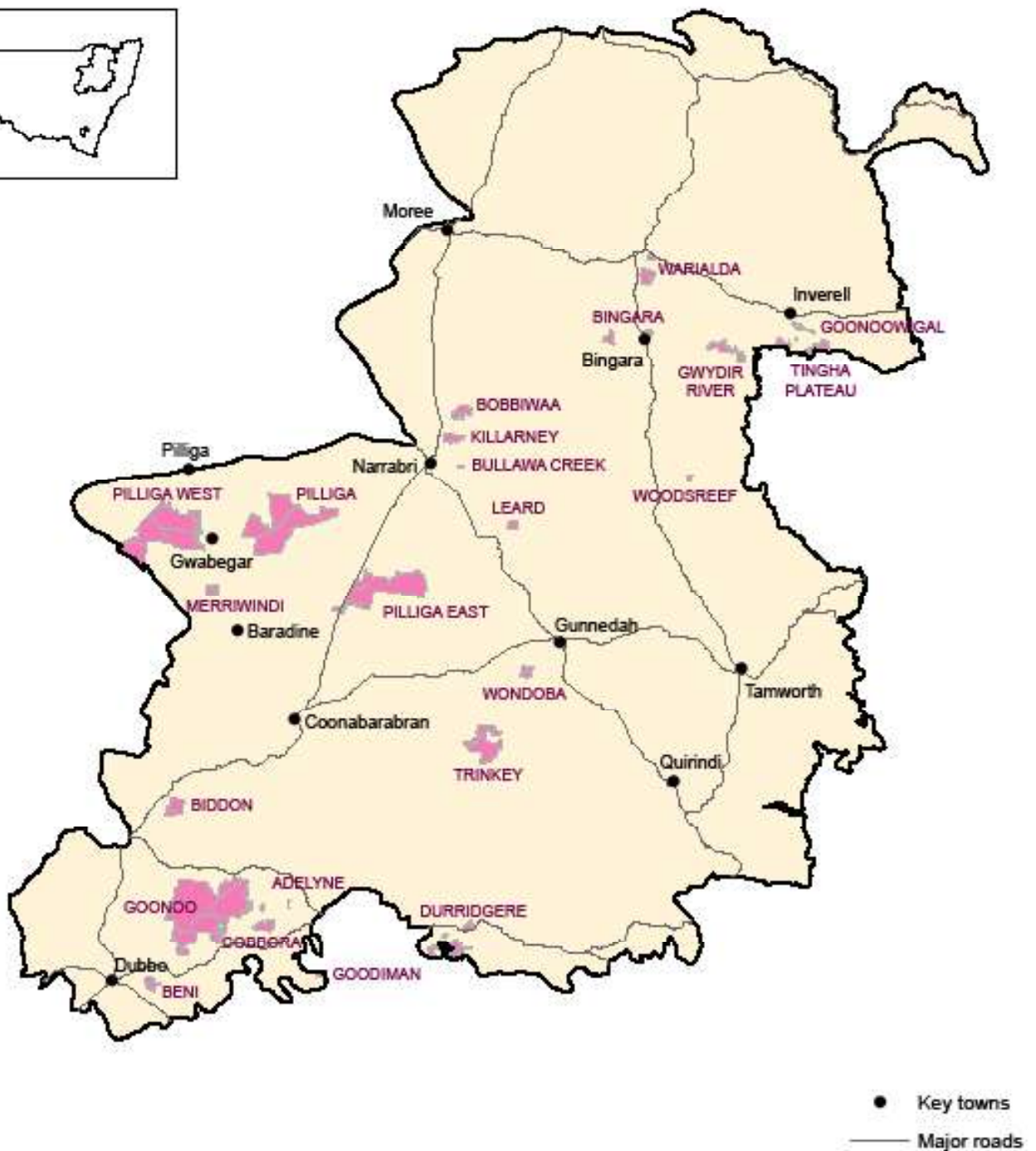
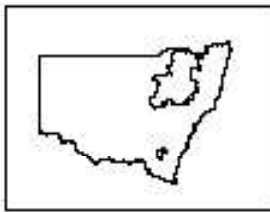


- Brigalow and Nandewar Community Conservation Area (*Brigalow and Nandewar Community Conservation Area Act 2005*)
- CCA Zone 1 (equivalent to National Parks under the National Parks and Wildlife Act 1974)
- CCA Zone 2 (equivalent to Aboriginal Areas under the National Parks and Wildlife Act 1974)
- CCA Zone 3 (equivalent to State Conservation Areas under the National Parks and Wildlife Act 1974)
- National Parks and Wildlife Estate (National Parks and Wildlife Act 1974)
- CCA Zone 4 (equivalent to State Forests under the NSW Forestry Act 2012)
- Major towns
- Major roads

Spatial data courtesy of Office of Environment and Heritage,
Department of Primary Industries and Forestry Corporation of NSW.



Brigalow and Nandewar State Conservation Areas (Community Conservation Area Zone 3)



- Brigalow and Nandewar Community Conservation Area
(Brigalow and Nandewar Community Conservation Area Act 2005)
- CCA Zone 3 State Conservation Areas

Note: Some State Conservation Areas contain more than one parcel of land.

Spatial data courtesy of Office of Environment and Heritage,
Department of Primary Industries and Forestry Corporation of NSW.

